

ESCAP/WMO Typhoon Committee
Forty-eighth Session
22- 25 February 2016
Honolulu, Hawaii
USA

FOR PARTICIPANTS ONLY
INF/TC.48/14.2 rev 1
16 February 2016
ENGLISH ONLY

**IN-KIND CONTRIBUTION
FROM TYPHOON COMMITTEE MEMBERS**

(Item 14 of Provisional Agenda – In-kind Contribution)

(Submitted by Typhoon Committee Secretariat)

ACTION REQUIRED:

The Committee is invited:
To take note of the In-kind contributions from the Members

APPENDICES:

- 1) DRAFT TEXT FOR INCLUSION AT SESSION REPORT
- 2) SUMMARY AND LIST OF IN-KIND CONTRIBUTION FROM TYPHOON COMMITTEE MEMBERS

APPENDIX A:

DRAFT TEXT FOR INCLUSION IN THE SESSION REPORT

REPORT OF TYPHOON COMMITTEE SECRETARIAT

14.2.1 The Committee expressed appreciation to the in-kind contributions from Members. **(Appendix XVI).**

14.2.2 The Committee also noted TCS together with the AWG had come with a new Guideline/Format in reporting the in-kind contributions.

(Additional text to be added in the light of discussion on this item)

APPENDIX B:

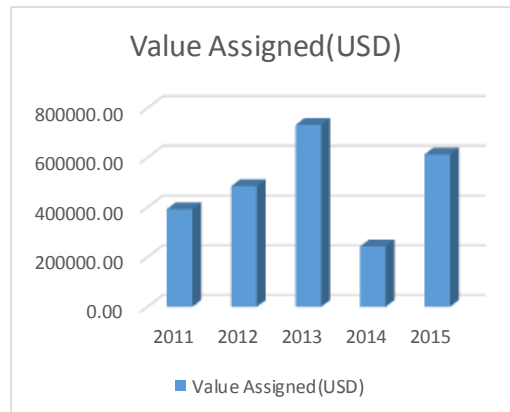
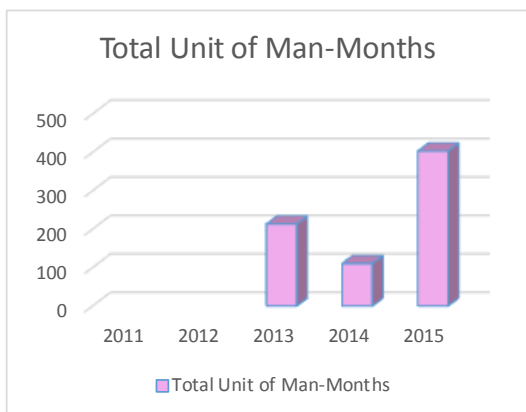
IN-KIND CONTRIBUTION FROM TYPHOON COMMITTEE MEMBERS FOR 2015

Total In-Kind Contributions for 2015

Total Value Assigned (USD): 612,707.68
Total Unit of Man-Months: 402.98

Member	Unit of Man-Months	Value Assigned(USD)	Remarks
China	103.37	167,156.00	
Hong Kong	1.50	6,000.00	
Japan	25.00	3,150.00	
Malaysia	-	35,403.68	
Philippines	1.46	6,225.00	
Republic of Korea	259.65	384,630.00	
Thailand	12.00	10,143.00	
<hr/>			
Total :	402.98	612,707.68	

Annually In-Kind Contributions



In-Kind Contributions for 2015

Member Name: China

Activities Supported	Unit of Man-Months	Value Assigned (USD)	Comments
Support to attend Integrated Workshop (IWS) and other activities	1.25	12,500	Transportation, Logistics and Travel Expenses for IWS; TC annual session; Working Meeting on Cooperative Mechanism for Coastal Multi-hazards Early Warning Information Sharing and Technical Transferring between PTC and TC, WGH Working meeting
Verification of tropical cyclone operational forecast	2.00	1,800	Transportation, Logistics and Travel Expenses
Publication of Tropical Cyclone Research and Review	24.00	19,000	Online submission system installation, Printing and Delivery expense for quarterly Journal
POP3 Tropical Cyclone Research and Review	0.50	1,000	Served as Associate Editors in reviewing manuscripts
WMO RTC Nanjing	64.62	28,756	Supports for course participants and office and teaching facility maintenance
Support to attend Integrated Workshop (IWS) (BOH)	0.75	7,500	Transportation, Logistics and Travel Expenses
Support to attend 47th annual session (BOH)	0.50	4,600	Transportation, Logistics and Travel Expenses
Field survey to southern Thailand of Professor Chen Yangbo	0.25	3,000	Transportation, Logistics and Travel Expenses
Kick-off meeting of China-Thailand OSUFFIM	1.00	2,500	Transportation, Logistics and Travel Expenses
Field survey to Chinese pilot city of OSUFFIM project	0.50	1,000	Transportation, Logistics and Travel Expenses
Funding support from China Government for OSUFFIM implementation	1.00	84,000	Funding support from China Government
one-month attachment training in SYS University from 15 November to 14 December 2015.	6.00	1,000	Training courses, Logistics
Job-training for Xin'anjiang Model Application	1.00	500	Training courses, Logistics
Total :	103.37	167,156	

In-Kind Contributions for 2015

Member Name: Hong Kong, China

Activities Supported	Unit of Man-Months	Value Assigned (USD)	Comments
			Expenses fully covered by CMA in supporting the 2-month attachment of Dr Feng Wen
Typhoon Committee Research Fellowship 2015 - Development of Objective Guidance on Tropical Cyclone Genesis Forecast using Global Models	0.50	-	Provide supports on technique development, preparation of tropical cyclone and NWP model data to conduct the research project and verification.
WGDRR [AOP 5] Training Workshop for Typhoon Committee Community Weather Station Project (iCoWIN) (2 - 4 November 2015)	1.00	6,000	Logistics support, coordination and planning, transportation and instrument, conduct training, offer expert advice and consultation as required.
Total :	1.50	6,000	

In-Kind Contributions for 2015

Member Name: Japan

Activities Supported	Unit of Man-Months	Value Assigned (USD)	Comments
Budget Item 3: Support for attachment of three(3) forecasters to RSMC Tokyo - Typhoon Center	4.00		Logistics and preparation for lecture materials
Publication of "Annual Report on the Activities of the RSMC Tokyo - Typhoon Center"	2.00	3,000	Edition, coordination and proofreading
Publication of "Technical Review"	2.00	150	Coordination and proofreading
Development and maintenance of the JMA Numerical Typhoon Prediction (NTP) website	5.00		Development and maintenance
Update of TOM	1.00		Coordination
Budget Item 8: Development of regional radar network	2.50		Lecture on radar composite map, and Quantitative Precipitation Estimation and Quantitative Precipitation Forecasting (QPE/QPF) Training on programming for radar composite maps
Storm Surge Watch Scheme	8.00		a) storm surge forecasting system development for multi-scenario prediction and daily run, and b) addition of 17 stations for time series charts
North Western Pacific Tropical Cyclone Ensemble Forecast Project (NWP-TCEFP)	0.50		Maintenance of the web server
Total :	25.00	3,150	

In-Kind Contributions for 2015

Member Name: Malaysia

Activities Supported	Unit of Man-Months	Value Assigned (USD)	Comments
10th Integrated Workshop at Berjaya Times Square, Kuala Lumpur		31,613.19	Hospitality
		2,243.66	Transportation
		1,546.83	Stationery
Total :	-	35,403.68	

In-Kind Contributions for 2015

Member Name: Philippines

Activities Supported	Unit of Man-Months	Value Assigned (USD)	Comments
Attend IWS in Malaysia (2 persons)	0.26	2,695	travel expenxses and allowances
KOICA northern Mindanao Project support personnel (2 personnel) for site survey	0.30	660	Airfare and allowance
KOICA northern Mindanao installation of equipments (3 personnel)	0.70	1,066	Transportation, Logistics and Travel Expenses
Hands on training on SSOPs for Coastal Multi-Hazards Early Warning System Project	0.10	1,184	expenses incurred during the 3 days workshop
2015 APEC Typhoon Symposium – Lessons Learned from Disastrous Typhoons	0.10	620	expenses incurred during the 2 days workshop
Total :	1.46	6,225	

In-Kind Contributions for 2015

Member Name: Republic of KOREA

Activities Supported	Unit of Man-Months	Value Assigned (USD)	Comments
Research Fellowship of TRCG	2.30	19,000	Travel expenses for five typhoon experts. DSA for five typhoon experts for 2 weeks. Other cost (KMA)
Development of typhoon seasonal prediction system	12.00		Operation and improvement of web-portal for typhoon seasonal prediction (KMA)
Technology transfer of the Typhoon Analysis and Prediction System (TAPS)	0.30		Implementation of TAPS to Lao PDR and Thailand (2 persons x 5 days) (KMA)
The 4th WGH Meeting linked with the 7th World Water Forum	2.50	13,480	Travel expenses for 6 member experts. DSA for four typhoon experts for 4 days. Other cost (WWF registration fee, etc.) (MOLIT_HRFCO)
WGH Field Survey Wrap-up Meeting	6.60	3,020	Travel expenses for three member experts. DSA for two typhoon experts for 4 days. Other cost (MOLIT_HRFCO)
Two experts financial support for attending the 10th IWS	-	2,130	Travel expenses for two member experts. DSA for two typhoon experts for 5 days. Other cost (MOLIT_HRFCO)
Development of the Extreme Flood Forecasting System	16.00		Establishment of the platform and level 1 module (MOLIT_HRFCO)
the Guidelines for Extreme Flood Risk Management	25.20		Refining and consulting the guideline and finalizing in Korean version (MOLIT_HRFCO)
Hosting the 10th WGDRR annual meeting	12.00	20,000	Hosting the 10th WGDRR annual meeting (NDMI)
Dispatch 3 experts to Vietnam & Lao PDR for Expert Mission	0.75	5,000	Travel Expenses (NDMI)
Expand Typhoon Committee Disaster Information System (TCDIS)	182.00	322,000	Expand Typhoon Committee Disaster Information System (TCDIS) (NDMI)
Total :	259.65	384,630	

In-Kind Contributions for 2015

Member Name: Thailand

Activities Supported	Unit of Man-Months	Value Assigned (USD)	Comments
TMD, Thailand supports four staff to serve as experts team in Radar Composite Project (AOP 5)	12.0		
TMD, Thailand supported to attend 10th IWS, 26 - 29 Oct. 2015		2,193	Travel expenses
TMD, Thailand supported for the Technical Meeting on Radar Composite Map, TMD Headquarters, 30 Nov. - 4 Dec. 2015		517	Meeting expenses such as lunches, coffee breaks for 42 participants, etc.
RID, Thailand supported to attend the 4th WGH combine with WWF7, Korea, 13 - 18 Apr. 2015		3,562	Travel expenses
RID, Thailand supported to attend 10th IWS, 26 - 29 Oct. 2015		3,085	Travel expenses
RID, Thailand supported on site for OSUFFIM Project (AOP 4), Thailand, 2 - 8 Sep. 2015		279	Travel expenses of invited expert
DDPM, Thailand supported to attend the 10th IWS, 26 - 29 Oct. 2015		507	DDPM provided an additional budget for extra per diem for one participant to attend the 10th IWS
Total :	12.00	10,143	

* TMD refers to the Thai Meteorological Department (TMD)

RID refers to the Royal Irrigation Department (RID)

DDPM refers to the Department of Disaster Prevention and Mitigation (DDPM)